



THE PAW PRINT



“Work with Me” Special Edition!

INTRODUCING JEFFERSON’S WORK WITH ME PLAN

by Glen Mayhew

Starting fall 2011, Jefferson College of Health Sciences (JCHS) is embarking on an exciting new adventure, “Work with Me” (WwM), which will involve both students and faculty. As part of the College’s reaccreditation process for the Southern Association of Colleges and Schools (SACS), JCHS had to develop a five-year quality enhancement plan (QEP) that would impact student learning outcomes. Selection and refinement of that initiative has taken place over a two-year period that involved students, graduates, faculty, staff, administrators and board members. The Work with Me project is centered on team work and interprofessional education (IPE).

The WwM program will provide baccalaureate students with the tools necessary to function effectively as a team member in an interprofessional healthcare environment. This end goal will be accomplished utilizing three 1-credit hour courses starting fall 2011. Students will take a distance learning class each year as a sophomore, junior, and senior. The final class will provide you the opportunity to put the skills and knowledge you’ve gained to practice in a simulated environment with other students from various disciplines.

So, what is IPE and how will it benefit students?

- Definition: interprofessional education occurs when two or more professions learn with, from and about each other to improve collaboration and the quality of care.



INSIDE THIS ISSUE:

<i>Introducing Jefferson’s Work with Me Plan</i>	1
<i>“Work with Me” Question and Answer Session</i>	2
<i>How do you define “interprofessionalism”?</i>	3
<i>Work with Me Crossword Puzzle</i>	4
<i>Jefferson Advertises</i>	5

- Students will learn to value and respect the contributions of other healthcare disciplines
- Students will learn what makes a team function effectively
- Students will work as healthcare team members in a simulated environment with other health professionals
- IPE will allow students to adapt quickly into an interprofessional healthcare team environment after graduating.

As current students, you will not have these IPE courses added to your curriculum, but you can already be a part of the “Work with Me” theme by learning about this new project in anticipation of the SACS visit. If JCHS maintains its accreditation, then we will be able to maintain our financial aid opportunities for our students and our high standing among healthcare colleges.

In April, a SACS accreditation team will be coming on campus as part of the reaccreditation

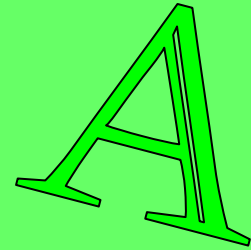
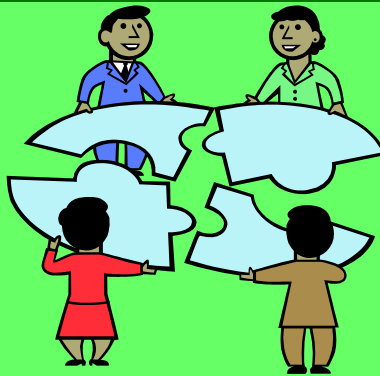
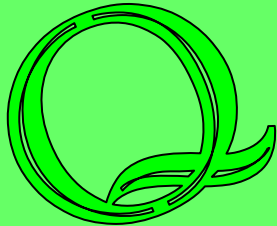
process. What will the site visitors be doing and what should you be aware of as a student?

- SACS will make a 3-day visit to JCHS (4/13 – 4/15)
- Site visitors will be meeting with faculty, students, staff and administrators.
- They will review records, documents and policies.
- SACS will interview those involved with the WwM project.
- The SACS team members may ask students if they are aware of or know what our QEP project (Work with Me) is.

The next time you are in a clinical environment, watch for ways that a team’s approach improves patient safety, outcomes, collaboration, or the quality of care. Learn more about the “Work with Me” project by checking out the rest of this special edition of *The Paw Print!*

BE SURE TO CHECK OUT THE [NEWSLETTER ONLINE](#) FOR MORE INFORMATION AND BACK ISSUES!

“Work with Me” Question and Answer Session



Work With Me is the title of the College QEP.

What's a QEP? QEP stands for Quality Enhancement Plan: a five-year plan that addresses a topic to enhance student learning.

Why do we have a QEP? Periodically, every college has to reaffirm its compliance with accreditation standards set by the Southern Association of Colleges and Schools (SACS). JCHS is doing this now, and as part of that process, we are required to develop our QEP.

What is the JCHS QEP? The JCHS QEP is *Work with Me: Foundations for Interprofessional Healthcare Teams*. It is an exciting plan that will impact your education here at JCHS and help prepare you to become a better healthcare professional! The plan calls for students to take a series of three 1-credit IPE (Interprofessional Education) courses that will focus on interprofessional teamwork.

Who will be required to take the new IPE courses? Starting in Fall 2010, the series of three 1-credit courses will be included in the curriculum of all baccalaureate students who enter JCHS as freshmen.

Then how does the JCHS QEP affect me as a current student? Because the QEP is part of the school's reaccreditation process, it affects whether or not JCHS continues to be an accredited school. As a student and future graduate, accreditation ensures that the program in which you are enrolled is "engaged in continuous review and improvement of its quality, that it meets nationally endorsed standards in the profession, and that it is accountable for achieving what it sets out to do" (American Psychological Association [APA], 2010, para. 2). For more information on why accreditation is important, visit <http://www.apa.org/support/education/accreditation/importance.aspx#answer>

What will the three new IPE courses entail? The first course will involve elements of teamwork. The second course will include learning the roles of other healthcare professionals, valuing those roles and learning to work together. The final course will involve experiential learning while working in interprofessional teams.

How Do YOU DEFINE “INTERPROFESSIONALISM”?

We asked our students, faculty, and staff to tell us what they think “interprofessionalism” means and why it's important for us to learn how to work in teams with professionals in other healthcare disciplines.

There were two faculty/staff winners and two student winners, but some of the other participants won prizes too for being the first to respond to the contest. Prizes ranged anywhere from skinitis to bookstore gift certificates to a spot on a College white water rafting trip. More contests and prizes are coming, including the “Work with Me” Crossword Puzzle Contest on the next page of this special edition of *The Paw Print!*

Check out some of the winning definition entries below!



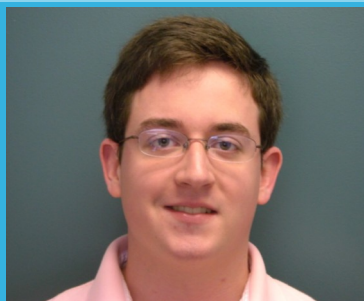
“Interprofessionalism is the interaction of different professional groups in a setting (such as in a work environment) and is when the groups share and learn information with each other between professions. They also know the roles of the other groups and work together for a common good. They should recognize jobs of the other groups and interact with them in order to boost professional performance and improve collaboration and the quality of care.”

— Kelly Price

1st place student winner

“Interprofessionalism is a concept realized whenever persons engage in shared learning and training experiences for the purpose of facilitating productive mixtures of individual skills, expertise, and values. Interprofessional activity helps foster cooperation and mutual exchanges of ideas among persons from diverse backgrounds. Interprofessionalism is especially important in the healthcare field where good clinical outcomes often depend on the formation of professional alliances and collaboration among care providers.”

-- Darrell Kirtland Shomaker, HSS Program Director,
1st place faculty winner



“Healthcare professionals do not work alone. When a patient regains their health, credit does not go to a sole individual. No, the ever gratifying task of making people well again falls on healthcare workers as an entire team. If that team is unable to work together, we aren't the ones who suffer, the patient is. By learning to work in an interdisciplinary manner, we, as aspiring healthcare professionals, show that we value our patients' lives.”

— Jordan White

2nd place student winner

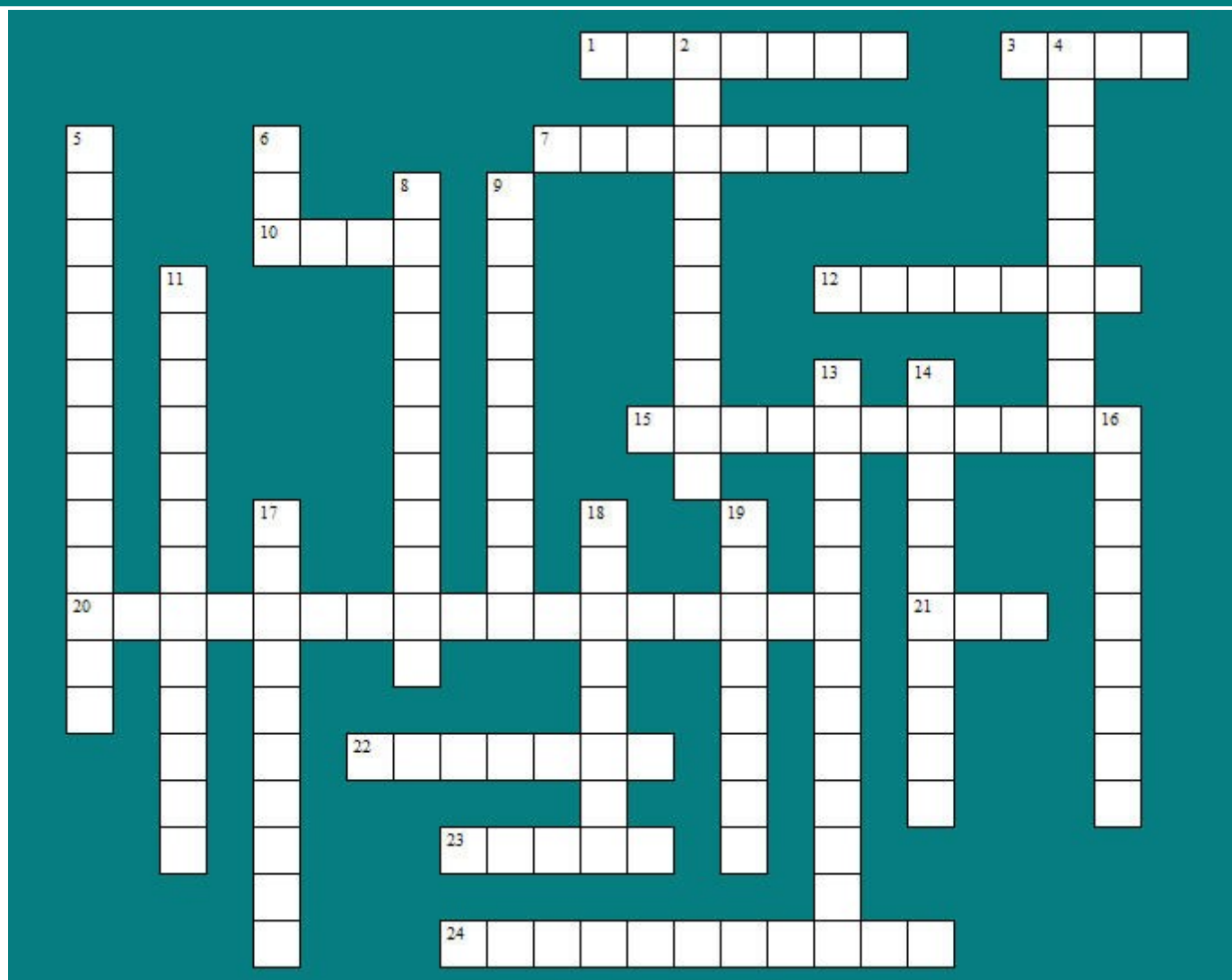
“Interprofessionalism is the ecosystem of healthcare. Within the healthcare system, all healthcare professionals must work together to care for patients, to ensure the functioning and survival of the ecosystem's inhabitants. In order for patients to thrive, healthcare professionals must work together to address the myriad of health concerns that patients have. Each healthcare discipline plays an interrelated function. An ecosystem demonstrates greater resilience when a diversity of organisms are inter-reliant.

Working together works.”

-- Judy Cusumano, Program Director for Health Psychology,
2nd place faculty winner



"WORK WITH ME" CROSSWORD PUZZLE



CONTEST!! PRIZES go to the first 10 people to submit the correct answers to this crossword puzzle to Letisha Houston at lmbeachy@jchs.edu! **Deadline: April 9, 2010**

ACROSS

- 1 JCHS's QEP topic is an important part of our College's _____.
- 3 Requires institutions to complete QEPs.
- 7 JCHS's QEP will enable students to learn more about _____.
- 10 Third word in QEP.
- 12 First word in QEP.
- 15 Teamwork means to _____ with others.
- 20 First word in IPE.
- 21 The focus of JCHS's QEP.
- 22 Teamwork improves _____ care.
- 23 _____ courses will be added to every student's program under the Work with Me plan.
- 24 Second word in QEP.

DOWN

- 2 Lab scenario.
- 4 Helper.
- 5 Teamwork requires it.
- 6 5-year plan on a specific topic to improve student education.
- 8 IPE encourages and improves _____ sharing between programs.
- 9 JCHS believes that our QEP will enable our students to become even better _____ professionals.
- 11 A QEP is part of the _____ requirements for an institution.
- 13 The JCHS QEP will apply to all _____ students.
- 14 JCHS's QEP title.
- 16 Second word in IPE.
- 17 JCHS's Work with Me plan will be integrated into every student's _____.
- 18 Completely online IPE classes.
- 19 _____ resolution.

Volume II
Special Edition
March 2010

Newsletter Editor:
Letisha Houston
Phone: 540-224-4895
E-mail: lmbeachy@jchs.edu



JEFFERSON COLLEGE
of HEALTH SCIENCES

The Student Affairs Team

Jennifer Carlo

Dean for Student Affairs

Gayle Deel

Department Secretary

Sarah Higginbotham

Coordinator of Violence Against Women Program

Jefferson Academic Support Services

Al Overstreet

Director of Academic Support Services

Dr. Danielle Lusk

Coordinator of the Learning and Writing Center

Emily Moore

Writing Specialist

Letisha Houston

Educational Technology Assistant

Counseling and Wellness

Dr. Stacey Lilley

Director of Counseling and Wellness

Zachary Widner

Health Records

Student Life

Scott Hill

Director of Student Life

Sarah Ross

Assistant Director of Student Life

JEFFERSON ADVERTISES

Jefferson College
of Health Sciences

920 South Jefferson Street
Roanoke, VA 24016

Coming Up at Jefferson... A Few Highlights



Jefferson Celebrates— “Work with Me” Theme
Wednesday, March 24, 2010, 11:30 a.m.—1 p.m.
Questions? Contact Sarah Ross at ciser1@jchs.edu

Work with Me Campus Scavenger Hunt Contest!

March 29—April 2

Look around campus for Bright Lime Green Puzzle Pieces—if you see one, bring it to Gayle Deel in Student Affairs. **Stay Tuned for More Details!**



Community Hour Speaker Series:

Dr. NL Bishop presenting “Where are we heading?”

Wednesday, March 31 at 12 p.m., Reid 418

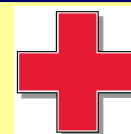


Check out the JCHS Events Calendar to see the other upcoming Wellness Speaker Events and Community Hour Speaker Series Events! For more information, contact Sarah Ross at ciser1@jchs.edu.

AMSA Sponsored Red Cross Blood Drive

Tuesday, March 30, 2010 in the Dog House

For more information, contact Earl Spain at despain7@onejeff.jchs.edu



What do you do with your unanswered questions?

If you have questions about time management, relationships, stress, anxiety, wellness, or other related topics, don't ignore them or shove them under the rug!

ASK Dr. Stacey Lilley today! She may answer your question privately or she may choose to respond to your question anonymously for the next issue of *The Paw Print*! Email Dr. Lilley at slilley@jchs.edu.

Please submit your “promotional ads” and “event announcements” for Volume 2, Issue 2 of this newsletter to Letisha Houston at lmbeachy@jchs.edu no later than **Friday, March 26, 2010.**

Please send all newsletter submissions for Volume 2, Issue 2 of this newsletter to Letisha Houston at lmbeachy@jchs.edu no later than **Friday, March 26, 2010.**

Go to the [Newsletter web pages](#) to see the [Submission Guidelines](#).